



WARNING – RISK OF SHOCK – DISCONNECT POWER BEFORE SERVICING



IMPORTANT: READ CAREFULLY BEFORE INSTALLING LUMINAIRE.

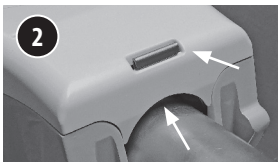
GENERAL: Upon receipt of luminaire thoroughly inspect for any damage.

SAFETY: OPENING THE DOOR FOR INSTALLING, SERVICING, OR CLEANING SHOULD BE PERFORMED BY A QUALIFIED SERVICE PERSON. This luminaire must be wired in accordance with the National Electrical Code, National Electrical Safety Code and applicable local codes and ordinances. Proper grounding is required to ensure personal safety. Overload circuit protection is recommended.

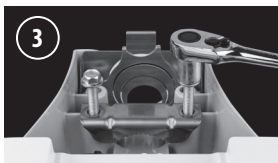
ATTENTION: See product label for electrical specifications. Original parts are not allowed to be substituted. Any changes or modifications, not expressly approved by the manufacturer, could void the user's authority to operate the equipment or warranty. For any receptacle options, any photo-control, shorting-cap, or controller used must be approved by the manufacturer.



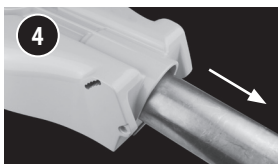
If mounting on pole arms with an outside diameter of 1.30" (33 mm) to 1.66" (42 mm), remove the small inner circle of the barrier shield. If mounting on a pole arm with an outside diameter greater than 1.66" (42 mm), remove entire shield.



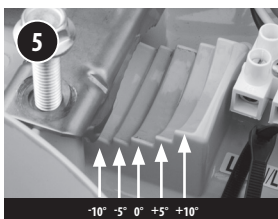
Open the door by pushing the quick access latch and lifting the door.



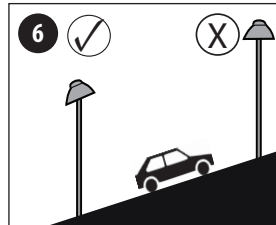
Loosen pole clamps in two places with 9/16" (14 mm) hex head. Clamp should be loosened sufficiently to allow insertion of pole as needed.



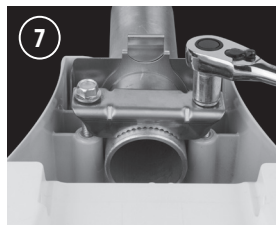
Slide luminaire onto pole, ensuring pole barrier shield is not displaced.



Check the level of the pole arm. Select step for desired tilt (-10°, -5°, 0°, +5°, +10°), then tighten bolts until clamps are snug against pole.



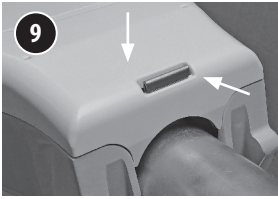
ORIENTATION: For optimum light distribution, install luminaire parallel to the road.



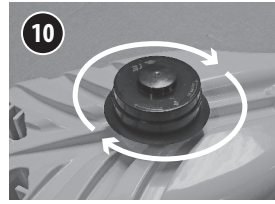
Once luminaire is set to desired tilt and orientation, tighten all pole clamp bolts to 10 ft-lb (13.6 N m).



Route AC mains cable through strain relief. If terminal block is present, attach AC wires to terminal block; L1: Line (Hot) lead; N/ L2: Neutral lead or Second Line lead; Ground/Protective Earth \oplus : Ground/Protective Earth lead. Maximum screw driver blade size is 7/32" (5.5 mm), straight-shaft blade-tip. Recommended torque on terminal screws is 16 in-lb (1.8 Nm). It is essential that proper polarity is observed or the luminaire may be damaged. Secure leads with tie wrap to 40 lb (178 N). A minimum 9 mm outside diameter entry cable is recommended.



Close door; ensure latch is fully engaged. Latch will snap in place automatically.



Install only the luminaire-manufacturer approved receptacle-plugs (i.e. photo-controller, controller or shorting cap) or the warranty will be void. To maintain luminaire certification, these items must contain electrical certification appropriate for the installation region (i.e. UL/CSA-listed in North America, CE in Europe).

ADDITIONAL SAFETY & PRECAUTIONS, WHEN LUMINAIRE IS EQUIPPED WITH RADIO(S): The equipment has been approved for wireless data communications applications where the equipment should be used at distances greater than 20 cm from the human body (except for hands, wrists, feet and ankles). **CAUTION:** This luminaire contains a non-rechargeable lithium battery. The battery is not replaceable. Battery may explode if mistreated. Do not recharge, disassemble, nor dispose in fire. **WARNING:** This equipment has been tested and found to comply with the limits for a Class A digital device, pursuant to part 15 of the FCC Rules. These limits are designed to provide reasonable protection against harmful interference in a commercial installation. This equipment generates, uses and can radiate radio frequency energy and, if not installed and used in accordance with the instructions, may cause harmful interference to radio communications. However, there is no guarantee that interference will not occur in an installation.

This device complies with part 15 of the FCC Rules. Operation is subject to the following two conditions:

- (1) This device may not cause harmful interference, and
- (2) This device must accept any interference received, including interference that may cause undesired operation.

This device complies with Industry Canada's licence-exempt RSSs. Operation is subject to the following two conditions:

- (1) This device may not cause interference; and
- (2) This device must accept any interference, including interference that may cause undesired operation of the device.

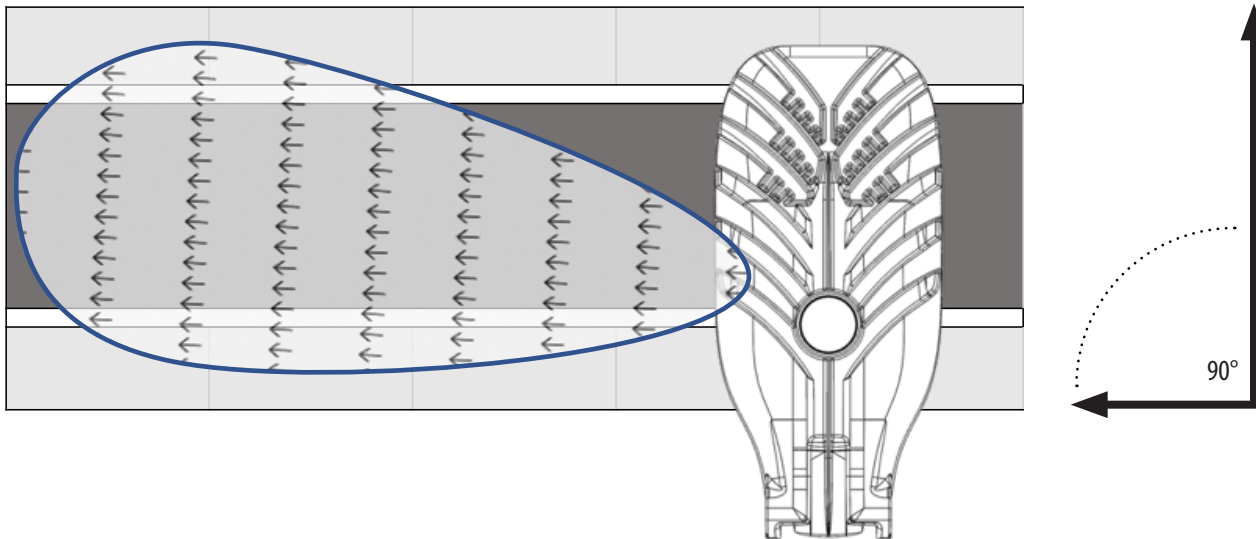
Model QD70 or QC70:
Contains FCC ID: N7NHL78M
Contains IC: 2417C-HL78M

Model QD40 or QC40:
Contains FCC ID: 2ACR30115
Contains IC: 12047A-0115

When equipped with T100 module:
Contains FCC ID: 2ACR3-T100
Contains IC: 12047A-T100

RADAR PATTERN (applicable to model QD-S):

For best detection performance, install luminaire at 90° to the roadway, at a height of 6 - 10 metres.



MODEL	WEIGHT	LENGTH	WIDTH	HEIGHT	EPA RATING
QB-S / QC-S / QD-S / QT-S	< 12 lbs (< 5.5 kg)	20.2" (513 mm)	9.3" (237 mm)	4.7" (120 mm) - 6.2" (156 mm)	< 0.45 ft ² (0.042 m ²)

Max. Ambient Temperature (T_a): Qx-S (+50°C)	Torque Setting for Mounting Bolts: 10 ft-lb (13.6 N m)
Mounting Height: Up to 65.6 ft (20 m)	Recommended Force to Secure Strain Relief: 40 lb (178 N)
Nominal Pole Arm: 1.66" (42 mm) to 2.375" (60 mm) O.D.	Acceptable Supply Wire Sizes: MIN. #18 AWG (0.75 mm ²)



Customer Service Centre
(Hours: 8:00 AM – 4:30 PM, AST)

T: +1.855.667.1228 (Canada & USA)
F: +1.902.667.1233 (Worldwide)

support.ledroadwaylighting.com
support@ledroadwaylighting.com