

# SLX-VIDEO

## EDGE VIDEO RECORDING HARDWARE SPECIFICATIONS

CAMERA SPECIFICATIONS		
Image Sensor + Lens Options	1080P (2MP Image Sensor)	~110° fixed lens (Wide FOV)
	4K (12MP Image Sensor)	~120° fixed lens (Wide FOV)
		~80° fixed lens (Mid FOV)
		~40° DFOV fixed lens (Narrow FOV)
Wide Dynamic Range	1080P 4K	~72dB at 8X gain

COMPRESSION STANDARD		
Video Compression	H.264	
H.264 Type	High Profile	
Video Bit Rate	1080P	Default 1mb/s
	4K	Default 4mb/s
Dual Streams	Supported for 1080p only	

IMAGE		
Max. Resolution	1080P	1920 x 1080 pixels
	4K	3840 x 2160 pixels
Max Frame Rate	30 fps	
On-Board Storage	Built-In Micro SD/SDHC/SDXC Slot, Up to 1.5 TB	

ELECTRICAL/MECHANICAL/ ENVIRONMENTAL	
Electrical Input	See SLX-Controls Spec Sheet for more information. ANSI C136.10 and C136.41 compliant.
Power Consumption	4W Avg @120V, 5.75W Max @120V
Vandal Resistance	IK-08 rated.
Ingress Protection	IP-66 rated
Temperature Rating	-30°C to +40°C rated (-22°F to +104°C)
Total Dimensions	88 mm maximum diameters, 216 mm maximum height
Total Weight	900 g

CERTIFICATIONS	
Product Safety Certification	UL
FCC	FCC, IC
Cellular module certification	PTCRB, FCC, IC

INTEROPERABILITY STANDARDS	
ONVIF Profile S (streaming ) supported <sup>1</sup>	
ONVIF Profile G (edge recording uploads) supported <sup>1</sup>	

All information provided is subject to change without notice. <sup>1</sup>Compatibility to be verified on a per VMS basis.



84 Chain Lake Drive, Halifax,  
Nova Scotia, Canada, B3S 1A2

T: +1.902.450.2222  
F: +1.902.450.0675

liveablecities.com  
info@liveablecities.com

0.90 kg/ 1.98 lbs



USER INTERFACE
Smart Client with intuitive, user-friendly interface
Simple access to live streaming and edge retrieval functionality with separate, easy-to-navigate tabs
One-click access to live-streaming (1 minute streaming default to limit cellular data usage)
User friendly calendar based access to edge-retrieval and video export functionality
Create custom views for multi-camera viewing

ASSET MANAGEMENT
Liveable Cities cameras come pre-commissioned to Milestone
Device Firmware upgrades available over-the-air

VIDEO STORAGE
Cloud based video storage, no on-premise storage requirements
30-day cloud storage of edge retrieved video
Video can be exported in .mkv file format
Live stream video is not automatically saved into cloud storage

UPGRADES AVAILABLE
Greater than 30-day cloud storage of edge retrieved video
Grouping of devices by region
Evidence Locker
Web Client provides one-click access to live-streaming and access to view videos which have been retrieved by Smart Client

PRIVACY	
Privacy	The system allows for Privacy Masking
License Plate Recognition	The system does not recognize or record license plates
Facial Recognition	The system does not track individuals or perform any form of facial recognition
Audio Recording	The system is not equipped with a microphone for audio recording

NETWORK	
Communication	LTE

# ORDER GUIDE - 1080P



REPEAT ORDER		
<input type="checkbox"/> YES	<input type="checkbox"/> NO	IF YES, LAST PO #: _____

SERIES	IMAGE SENSOR & LENS	VOLTAGE	SD CARD	RECORD BITRATE	STREAM BITRATE <sup>12</sup>	CELLULAR DATA BUDGET <sup>3</sup> [MONTHLY]	VIDEO MANAGEMENT SYSTEM (VMS)	ANALYTICS <sup>45</sup>	OTHER OPTIONS
<b>CX</b>	<b>1</b>								
CX	1-Dual 1080p, 2MP, 110°(Wide FOV)	2-220-240V (CE) A-120-480V (UL)	032-32GB 064-64GB 128-128GB 256-256GB 512-512GB 1T0-1TB 1T5-1.5TB	1-1MBPS 2-2MBPS	A-100KBPS B-256KBPS C-512KBPS 1-1MBPS 2-2MBPS	05-5GB 10-10GB XX-Custom GB	X-No VMS M-Milestone VMS supplied and cloud hosted by LRL/LC C-Customer supplied ONVIF VMS	XX-No analytics V- Vehicle Count (Large, Small, Motorcycle) ID-Intrusion Detection BC-Bike Count (Path / Bike Lane only) ST-Stopped Traffic SO-Space Occupied (loading zone, rush regulation) WW- Wrong Way Detection	If applicable, insert 4 digit Special Product Request code (SPR)

<sup>1</sup>Stream quality depends on available bandwidth (BW) in the region <sup>3</sup>0.6GB data used by camera in steady state to communicate on-line status and health with VMS <sup>4</sup>Only one analytic can run per image sensor except for ID <sup>5</sup>Analytics can only be set up after installation  
<sup>2</sup>Default configuration: 512GB SD card, 1 Mbps record bitrate, 1 Mbps stream bitrate, and a 5GB cellular data budget. For additional details, see the last page.

Required for repeat orders		For SmartLinX Setup (Not Required For Repeat Orders)		CONTROLLER	
<b>ORDERING AND SETUP INFORMATION</b>		Streetlighting Data Collection, Visualization, & Control		YES <i>Required for analytics data visualization</i>	
Order Configuration		Default Lighting Type Example: LED, HPS, Mixed, Other		NO	
Quantity		Dimming		0-10V    DALI    None	
Customer Name		Address		Lat: Long:	
Project Name		SmartLinX Site Admin		Name Phone Email	
Approved By					
Date					
Comments					

Internal (Not Required For Repeat Orders)							
<b>Controller Network Type</b>	LTE-M	NB-IoT	LTE		<b>Customer ID#</b>	Controller	Camera

Required For Milestone [VMS=M] (Not Required For Repeat Orders)				CAMERA
<b>CONTACT INFORMATION</b>				
Name	Phone	Comments		
Address				
City	State/Province			
Country	Postal Code/ Zip Code			
<b>ADMIN USERS*</b>				
Name	Name	Name	Name	
Phone	Phone	Phone	Phone	
Email	Email	Email	Email	
<b>STANDARD USERS</b>				
Name	Name	Name	Name	
Phone	Phone	Phone	Phone	
Email	Email	Email	Email	

\*Admin User has the ability to direct liveable cities to add and remove users, and will be the point of contact for the customer for communications around product support, firmware upgrades, etc

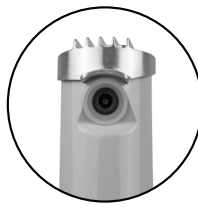


84 Chain Lake Drive, Halifax,  
Nova Scotia, Canada, B3S 1A2

T: +1.902.450.2222  
F: +1.902.450.0675

liveablecities.com  
info@liveablecities.com

# ORDER GUIDE - 4K



REPEAT ORDER		
<input type="checkbox"/> YES	<input type="checkbox"/> NO	IF YES, LAST PO #: _____

SERIES	IMAGE SENSOR & LENS	VOLTAGE	SD CARD	RECORD BITRATE	STREAM BITRATE <sup>12</sup>	CELLULAR DATA BUDGET <sup>3</sup> [MONTHLY]	VIDEO MANAGEMENT SYSTEM (VMS)	ANALYTICS <sup>45</sup>	OTHER OPTIONS
<b>CX</b>									
CX	<b>1</b> – Single 4K, 12MP 120° (Wide FOV) <b>B</b> – Single 4K, 12MP 80° (Mid FOV) <b>A</b> – Single 4K, 12MP 40° (Narrow FOV)	<b>2</b> -220-240V (CE) <b>A</b> -120-480V (UL)	<b>032</b> -32GB <b>064</b> -64GB <b>128</b> -128GB <b>256</b> -256GB <b>512</b> -512GB <b>1T0</b> -1TB <b>1T5</b> -1.5TB	<b>4</b> -4MBPS <b>8</b> -8MBPS	<b>A</b> -100KBPS <b>B</b> -256KBPS <b>C</b> -512KBPS <b>1</b> -1MBPS <b>2</b> -2MBPS <b>4</b> -4MBPS <b>8</b> -8MBPS	<b>05</b> -5GB <b>10</b> -10GB <b>XX</b> -Custom GB	<b>X</b> -No VMS <b>M</b> -Milestone VMS supplied and cloud hosted by LRL/ LC <b>C</b> -Customer supplied ONVIF VMS	<b>XX</b> -No analytics <b>VC</b> -Vehicle Count (Large, Small, Motorcycle) <b>ID</b> -Intrusion Detection <b>BC</b> -Bike Count (Path / Bike Lane only) <b>ST</b> -Stopped Traffic <b>SO</b> -Space Occupied (Loading zone, Rush regulation) <b>WW</b> -Wrong Way Detection	If applicable, insert 4 digit Special Product Request code (SPR)

<sup>1</sup>Stream quality depends on available bandwidth (BW) in the region <sup>3</sup>0.6GB data used by camera in steady state to communicate on-line status and health with VMS  
<sup>2</sup>Default configuration: 1TB SD card, 4 Mbps record bitrate, 4 Mbps stream bitrate, and a 10GB cellular data budget. For additional details, see the last page.

<sup>4</sup>Only one analytic can run per image sensor  
<sup>5</sup>Analytics can only be set up after installation

Required for repeat orders		For SmartLinX Setup (Not Required For Repeat Orders)			CONTROLLER	
<b>ORDERING AND SETUP INFORMATION</b>		Streetlighting Data Collection, Visualization, & Control		YES <i>Required for analytics data visualization</i>	NO	
Order Configuration		Default Lighting Type Example: LED, HPS, Mixed, Other				
Quantity		Dimming	0-10V	DALI	None	
Customer Name		Address		Lat:		
Project Name				Long:		
Approved By		SmartLinX Site Admin		Name		
Date				Phone		
Comments				Email		

Internal (Not Required For Repeat Orders)							
Controller Network Type	LTE-M	NB-IoT	LTE		Customer ID#	Controller	Camera

Required For Milestone [VMS=M] (Not Required For Repeat Orders)				CAMERA	
<b>CONTACT INFORMATION</b>					
Name		Phone		Comments	
Address					
City		State/Province			
Country		Postal Code/ Zip Code			
<b>ADMIN USERS*</b>					
Name		Name		Name	
Phone		Phone		Phone	
Email		Email		Email	
<b>STANDARD USERS</b>					
Name		Name		Name	
Phone		Phone		Phone	
Email		Email		Email	

\*Admin User has the ability to direct liveable cities to add and remove users, and will be the point of contact for the customer for communications around product support, firmware upgrades, etc




84 Chain Lake Drive, Halifax,  
Nova Scotia, Canada, B3S 1A2

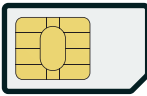
T: +1.902.450.2222  
F: +1.902.450.0675

liveablecities.com  
info@liveablecities.com

# ADDITIONAL INFO

Recommended for max storage
  Recommended for max quality
  Recommended SD size card.

SD Storage Capacity - In Days (approximate)							
	32GB	64GB	128GB	256GB	512GB	1TB	1.5TB
2 x 1080P 1MB/S Bitrate	1.5	3	6	12	23	47	71
2 x 1080P 2MB/S Bitrate	0.7	1.5	3	6	12	23	35
1 x 4K 4MB/S Bitrate	0.7	1.5	3	6	12	23	35
1 x 4K 8MB/S Bitrate	0.4	0.7	1.5	3	6	12	17

Video Upload & On-Demand Stream Budget per device (approximate)*						
		# of Cameras				
		1	10	25	50	100
<b>1080P @ 1MB/S Bitrate</b>	5GB Plan (Default)	9.8 hrs	98 hrs (~4 days)	244 hrs (~10 days)	488hrs (~20 days)	978 hrs (~40 days)
	10GB Plan	20.9 hrs	209 hrs (~8.5 days)	522 hrs (~22 days)	1044 hrs (~43 days)	2088 hrs (~87 days)
<b>1080P @ 2MB/S Bitrate</b>	5GB Plan (Default)	4.9 hrs	49 hrs (~2 days)	122 hrs (~5 days)	244hrs (~10 days)	488 hrs (~20 days)
	10GB Plan	10.4 hrs	104 hrs (~4 days)	261 hrs (~11 days)	522 hrs (~22 days)	1044 hrs (~43 days)
<b>4K @ 4MB/S Bitrate</b>	5GB Plan (Default)	2.3 hrs	23 hrs (~1 day)	65 hrs (~2.7 days)	131 hrs (~5.5 days)	232hrs (~11 days)
	10GB Plan	4.6 hrs	46 hrs (~2 days)	130 hrs (~5.4 days)	232 hrs (~11days)	464 hrs (~22 days)
<b>4K @ 8MB/S Bitrate</b>	5GB Plan (Default)	1.2 hrs	12 hrs (~0.5 days)	31 hours (~1.3 days)	61 hrs (~2.5 days)	122 hrs (~5 days)
	10GB Plan	2.3 hrs	23 hrs (~1 day)	65 hrs (~2.7 days)	131 hrs (~5.5 days)	232 hrs (~11 days)

\*Data plan is per SIM Card, so available data budget is per device regardless of the number of image sensors in a device.